

Return to Hunting Creek

Excavators returned to the Hunting Creek site this spring to continue investigating aboriginal burials disturbed by cultivation and artifact looters. This marks the second season there after CFAR member Paul Brendle reported the site's destruction in the spring of 1991. Working under the direction of the NC Office of State Archaeology, CFAR provided a field crew, equipment, logistical support and volunteer coordination for the project together with support from the Soil Conservation Service and Horizons Unlimited, Inc.

During the 1992 season, we concentrated on getting a better picture of the site's archaeological remains. The plowzone was removed from a 20' x 40' block to expose both new features as well as the burials and features identified by the salvage work done in 1991. All together, excavations from the two seasons have uncovered numerous human burials, 19

Found on the surface, this 3"x 2" soapstone effigy is a unique find.



cultural features and 64 postholes. Most notable among the features dug this past season was a large shell and trash midden containing a variety of artifacts, including mussel shell and animal bone, bone tools, pottery, stone tools, two articulated turkey skeletons, and five intrusive burials.

Hunting Creek is important because it shows the presence and richness of a Late Woodland period (ca. AD 900 - AD 1500) village or hamlet associated with a culture archaeologists call the Uwharrie Phase. Set on a hilltop, the site is a rare find in North Carolina's Piedmont region because most upland sites were destroyed by soil loss and severe erosion following European colonization. Another of the site's unique aspects is its distance from water, which would have had to be carried from a source about 500 meters away. Hunting Creek gives archaeologists an unparalleled opportunity for long-term research into this poorly understood period.

The project gave, as well, an opportunity to assist the Office of State Archaeology in training Soil Conservation Service personnel in the recognition and protection of archaeological sites within soil management program districts. The SCS filmed much of the work and plans to incorporate it into its



Leg bones broken by a plow's disc show how burials are being destroyed at Hunting Creek. Preliminary investigations suggest this was the burial site of a woman who died about 1,500 A.D.

national training program on cultural resources.

The 1992 excavations, conducted from March 2 to March 29, logged 640 hours of labor from the primary field crew; it included CFAR members John David, Mike Murrow, Terry Mills and John Arsenault. Another 382 hours were logged from 25 volunteers. Indeed, the project couldn't have been done without volunteers willing to endure the inclement weather conditions of sub-zero wind chill, rain, hail, snow flurries, and high winds that plagued the dig. And, of course, a significant debt is owed to the landowners, Mr. and Mrs. Keith F. Sparks, whose assistance and cooperation made the project possible.



Director's Message

from Bill Haworth

With each newsletter, I am surprised at how quickly time has passed since our last one and astonished at the number of activities we have been involved in. Recent months have witnessed the completion of the Hunting Creek Project, the Horizons Unlimited Open House, a walk-over survey of the Woodfield Scout Preservation camp near Asheboro, our 1992 annual membership meeting and the ongoing volunteer labs in Asheboro and Raleigh. CFAR members were also involved in open houses at the Museum of Anthropology at Wake Forest University and at the Yadkinville Historical Society Open House day where they identified artifacts and demonstrated flintknapping techniques and primitive weapons and their use. And conscientious members helped stop the looting of a Late Woodland site on the Deep River near Worthville and logged a site report about it.

As 1992 winds down, we turn our thoughts to next year's projects. And there is a big one on the horizon. We will begin a fund-raising campaign to acquire money for a permanent facility to house the laboratory and curation space and unified base of operations we need. I hope to enlist your support and look forward to seeing each of you at future CFAR events.

Alice Fowler and John Morrison Make Significant Contributions

Alice Fowler, owner of Intertec Design in Raleigh, gave a computer system to CFAR. Alice, who volunteers frequently on the Pee Dee Archaeological Project and in the Raleigh lab, upgraded her business system. When she learned of CFAR's computer needs, she donated her old system to the Center. It will help immeasurably with tasks like artifact cataloging, word processing and graphics design.

John Donald Morrison of Asheboro donated his artifact collection containing a wide variety of projectile points, pottery sherds, and other cultural materials indigenous to the mountains of North Carolina. Mr. Morrison, originally from Macon County, found the artifacts on his family farm. They represent a lifetime of collecting and love for Indian lore. Now in his early eighties and living in Asheboro near his son, Mr. Morrison wanted to give his treasure to a suitable organization for a positive purpose. Lewis Edwards, CFAR board member and officer, met with Mr. Morrison and arranged for the artifacts' transfer. Lab volunteers Gary Wise and Jack McCollum then cleaned, identified, and inventoried the collection. It was dis-

played at our annual meeting on July 11 at the Mt. Shepherd Retreat Center in Asheboro. A portable exhibit will be developed for display and use during educational events at libraries, schools, and other locations.

CFAR offers sincere thanks to Alice Fowler and John Morrison for their assistance to help "C-FAR into the Future."

CFAR Archaeology Labs

The Asheboro lab operates every Wednesday from 7 to 10 p.m. at Randolph Community College. Contact Lewis Edwards in the evenings or on weekends at (919) 873-7065.

The Raleigh lab operates every Wednesday from 6 to 9 p.m. at the Archaeology Branch of North Carolina's Archaeology and Historic Preservation Section. Contact Bill Oliver during the day at (919) 733-7342.

The People of One Fire Award

Each year, CFAR board members have one tough job. Faced with the significant work done by the numerous volunteers who keep CFAR going, they must choose one or two to honor with *The People of One Fire Award*. Established in 1991, the award recognizes those behind-the-scenes people whose contributions in time and temperament keep the labs and the field work going.

This year, in an exceptional move, the board selected seven people to get the commemorative plaque at CFAR's annual membership meeting in July. Congratulations go to: Jack McCollum, Nancy King, Terry Mills, Bob Schwager, Bill Terrell, Steve Wilhelm, and Gary Wise.

And heartfelt thanks go to them as well. Together they have logged roughly 4,000 hours as CFAR volunteers.

Introduced affectionately as "the three amigos" at the recognition ceremony, Steve Wilhelm, Gary Wise and Jack McCollum are three friends who have participated in every Pee Dee Project and Uwharrie Project venture since they completed the Archaeological Technician Program jointly presented by Randolph Community College and CFAR in 1988.

"While that is a significant contribution," says Lewis Edwards, who supervises CFAR's lab at Randolph Community College. "what really distinguishes Jack, Gary and Steve is their individual and collective assistance in the less exciting aspects of archaeology,

such as loading and repairing equipment, setting up field camps, and demonstrating their flintknapping skills for schools, museums and civic groups.

"They are just plain there when needed."



Award winner Terry Mills, shovel in hand, tosses dirt in a sifter at a Pee Dee Project site.

Terry Mills and Bill Terrell are from the same mold. In fact, nobody wants to go the field unless they show up. Terry's good humor and talent for spoof in the sing-song ditties he composes do much to lift spirits on those 95 degree days when the flies hover and bite. And nobody moves dirt like he does; he guides big equipment like backhoes with skill and panache.

"The flat-shovel king" is Bill

Terrell's epithet. A graduate student in archaeology at Wake Forest University, Bill has honed a meticulous excavation technique he readily shares with other volunteers. With steady commitment, he has worked full time at CFAR summer digs in 1990 and 1991 and has helped excavate other sites sponsored by both CFAR and archaeologists across the state. Like Terry, Bill volunteers at the Asheboro lab, and both completed the Archaeological Technician Program.

Nancy King, another program graduate who is a microbiologist for the State Health Lab in Raleigh, has worked selflessly on the Pee Dee Project and has volunteered in the Raleigh lab since 1987. "Her willingness to do any job asked of her, from digging to mapping, has been a major asset to the project," says archaeologist and Raleigh lab supervisor Bill Oliver.

And while nobody wants it go get around lest everybody shows up on Nancy's stint, she is one of the best cooks to ever bless a field house.

Robert "Bob" Schwager, a retired engineer from CP&L, is a two year veteran of the Raleigh lab. Although Bob has worked in the field at the Teal Site, his recognition results from countless hours spent drafting, inking and lettering maps and drawings for the Pee Dee report.

"Without his skill and dedication, much of the final drawing would still remain to be completed," Bill Oliver says.

News and Activities

Worthville Site Looters Apprehended

Recently, CFAR members saw several looters destroying a prehistoric site located on the Deep River near Worthville, NC. Because they reported these illegal activities to the Office of State Archaeology, the landowner, and local law enforcement agencies, two individuals were apprehended while potting the site. Information by the perpetrators also implicated one other person involved with the site's looting.

The sharp eyes, quick thinking and prompt action of the CFAR members responsible for halting the destruction of the Worthville site is greatly appreciated by the archaeological community, as well as by the property's landowner. Continued diligence by CFAR members will help preserve our irreplaceable archaeological heritage.

Boy Scout Camp Surveyed

A preliminary walk-over survey of the Woodfield Scout Preservation camp near Asheboro was completed this spring thanks to the efforts of CFAR members Bill Haworth, Randy Lyndon, Bill Terrell, Richard Terrell, Lewis Edwards, and other volunteers. The area surveyed at the camp was being disturbed by the development of new campsites. The affected area has been covered in grass to prevent erosion to preserve any significant archaeological remains present. Materials recovered from the survey appear to date sometime during the Archaic period (ca. 8000 - 500 BC.). CFAR will work with the Scout Council to develop a plan for preserving the camp's archaeological integrity and reporting other sites discovered in the future.

Publications' Director

A time comes in every organization when the handful of people who started things rolling can no longer juggle all the demands. It has happened with CFAR as research projects, curation work, public information and outreach requests increase each year. While the growth has been gratifying, CFAR directors realized some things were amiss. Particularly, issues of *Common Ground* were becoming few and far between because there were too few hands to do it. This led to the

appointment of Margo Price, a CFAR member who holds journalism and anthropology graduate degrees from UNC-Chapel Hill, as publications' director.

Beginning 1993, *Common Ground* will find its way to your door four times each year. It will include regular departments and features. And to insure it meets your needs, Margo would like your input. Write or call her with suggestions about the kinds of things you want in it. Her address is: 105 Eastridge Place, Chapel Hill, N.C. 27516. Her phone number is: (919) 929-5565.

Horizons' Open House a Huge Success

Horizons Unlimited, Inc. in Salisbury conducted an open house on April 26 and unveiled a new archaeology room featuring interpretive archaeological displays designed and built by CFAR members. According to Cindi Zeger, director of Horizons Unlimited, Inc., the open house was a huge success with more than 600 people attending. Ms. Zeger praised the efforts of CFAR volunteers Mike Murrow, Steve Wilhelm, and Bob Crutchfield for adding to the day by giving flintknapping and primitive weapons demonstrations. She also thanked CFAR members Bill Oliver, archaeologist for the NC Office of State Archaeology, and Lewis Edwards for their help with artifact identifications. If you were unable to attend the open house and would like to visit the exhibits, contact Horizons Unlimited, Inc. at 704-639-3004 in Salisbury.

Board Member Named

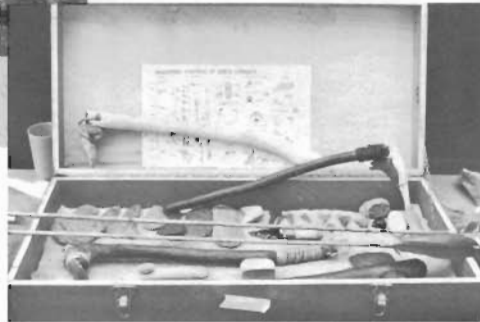
Hilton Cochran is CFAR's newest board member. Nominated at the Board of Directors' meeting on March 30, 1992, Hilton's three-year appointment became effective with his election by the membership at the annual meeting last July. A retired insurance executive from Troy, Hilton brings a wealth of insight and administrative experience to the organization. Over the years, he has had a lengthy involvement with community issues in the Montgomery County area and has served on the boards of various corporations in Troy. Hilton's interest in history and archaeology also goes back over the years, evidenced in part by his support of Town Creek Indian Mound, the reconstructed Pee Dee ceremonial center in Montgomery County. With his attention turned toward CFAR, Hilton will help expand its research, outreach and educational efforts.

Annual Membership Meeting

From left to right, Bob Schwager, Nancy King, Bill Terrell and Terry Mills. Each received The People of One Fire Award.



The People of One Fire Awardee Steve Wilhelm, above, demonstrates flintknapping. To the left is a cache of reproduced tools and weapons.



Alice Fowler, above, tries her hand at the pottery wheel. Below, craftsman Gary Wise and another People of One Fire Award winner



One Fire Awardee Jack McCollum (left) and Richard Terrell examine reproduced weapons.



The 1992 Annual Membership Meeting on July 11 was a resounding success, with almost 70 members gathering at the Mt. Sheperd Retreat near Asheboro. Exhibits of artifacts and pottery, craftsmen reproducing stone tools and weapons, and potters patiently giving lessons on pot throwing educated and entertained attendees. Archaeologists Bill Oliver and John Davis gave updates on two of CFAR's major excavation projects, the Pee Dee Project and Hunting Creek. The People of One Fire Award presentations and

previews of future plans, such as an historic kiln site dig at Mt. Sheperd, rounded out the formal program. And as one of the day's pure pleasures, there was some of the tastiest barbecue this side of the Mississippi.

Membership Information

CFAR Notes

Do you know of activities or events involving or affecting CFAR members? If so, let us know about them. Send your notes to Margo Price at 105 Eastridge Place, Chapel Hill, NC 27516 for inclusion in upcoming issues of *Common Ground*.

Members: Lost & Found

We have lost contact with some of our CFAR members. To update our files, please help us locate Richard Hawley.

Moving?

Send change of address notification to Margo Price at the address listed above under *CFAR Notes*.

If you know someone who would be interested in CFAR and would like to become actively involved with our organization, please have them contact CFAR at the address below:

NC Center for Archaeological Research, Inc.
PO Box 109
High Point, NC 27261

Make checks payable to: NC CFAR

Name: _____

Address: _____

Phone: _____

CFAR Membership Fee \$10.00

Donation to CFAR (circle one)

\$25

\$50

\$100

\$500

Other

Please send information about the Endowment Program



P.O. Box 109
High Point, NC 27261